

Nº

~~13~~

ANO XVIII

De cargo Derecho & Apartados

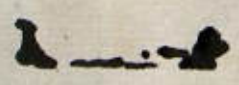
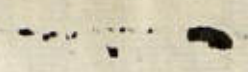
9

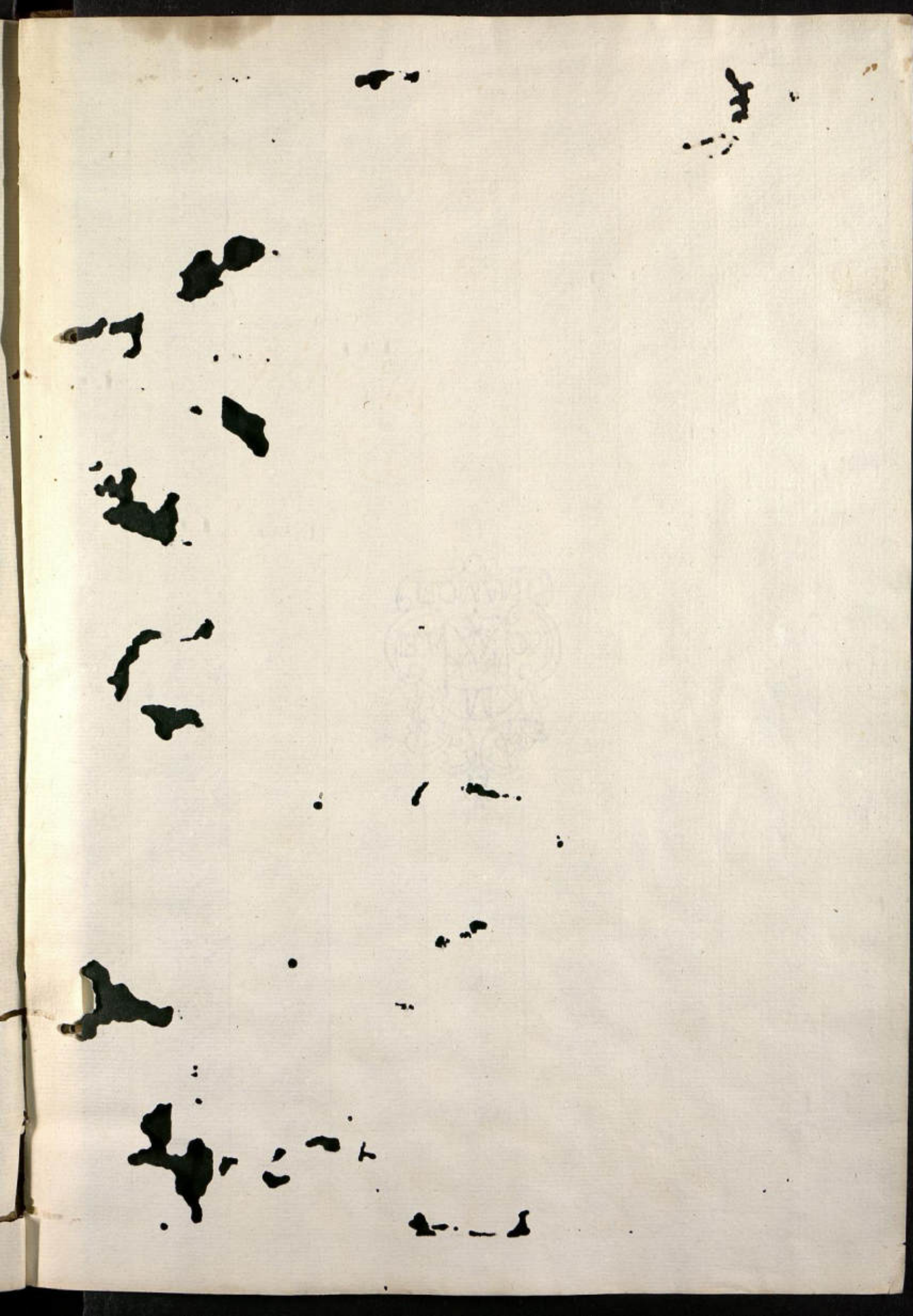
M. P. y J.
195





LFB.9
DOC.20
1 F





[Faint, illegible handwriting]

[Faint, illegible handwriting]

[Faint, illegible handwriting]

[Faint, illegible handwriting]

1
La contribucion a los veinte y cinco p. annuales. del Sr.
Dño. se apartado por la Cava de Gremio, ; queda suspenso
por precepcion del Patron de ella, desde el 5. de Mayo del
corriente año, en que fueron cumplidos los seis meses
que tubo adelantados

J. H. & C. L. S.
S

[Faint, illegible handwriting at the top of the page, possibly bleed-through from the reverse side.]

[Faint, illegible handwriting in the middle of the page.]



Small dark ink mark at the top center.

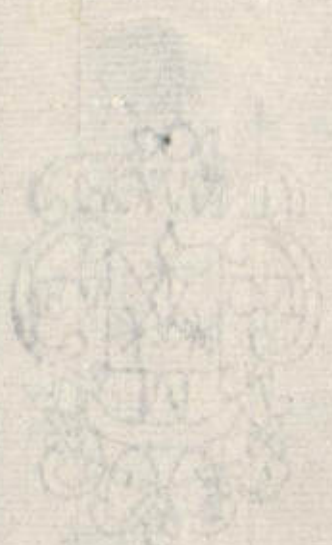
Small dark ink mark at the top right.

Large, dark, irregular ink blotch on the left side, upper section.

Small, dark, irregular ink blotch on the left side, middle section.

Large, dark, irregular ink blotch on the left side, middle section.

Large, dark, irregular ink blotch on the left side, middle section.



Small, dark, irregular ink blotch in the lower middle section.

Large, dark, irregular ink blotch on the left side, lower section.

Large, dark, irregular ink blotch on the left side, lower section.

Small, dark, irregular ink blotch at the bottom center.

Small, dark, irregular ink blotch at the bottom right.



